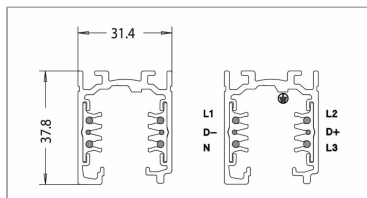
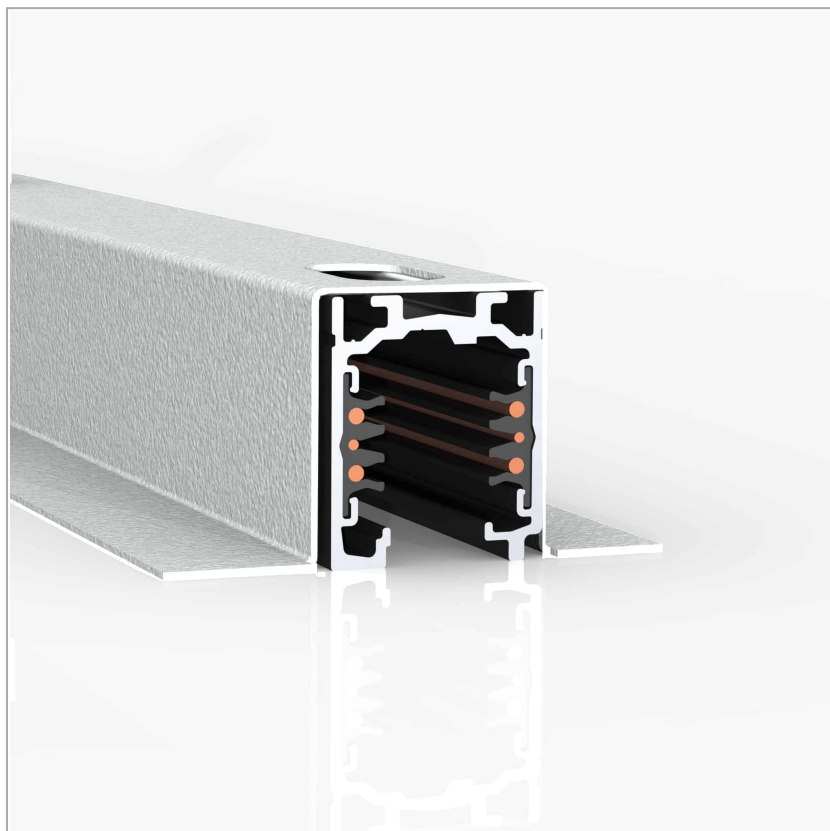


File 2/2H system -Eurostandard binary module 230V

code LT25T.2000/01



PRODUCT DESCRIPTION

Modular system for direct, diffused and/or accent lighting, consisting of hollow profiles made from 75x78 mm painted or anodised extruded aluminium, with a predefined length or cut to measure, available in the following versions: wall-mounted, ceiling-mounted, suspended, recessed with a super-slim edge trim, just 5 mm wide, and trimless, fully-retracting flush recessed. To be integrated with LED linear light sources, battens for T16 and T16 seamless fluorescent lamps, recessed versions with built-in LED source or for QPAR16 halogen/LED lamps and max 16A 3-circuit track modules for inclusion of projectors. Fluorescent battens, complete with 50/60 Hz 230/240 V electronic power supply, LED batten driver included. To be completed with side end caps with Light Proof system, opal white or microprismatic PC diffusing screen (in accordance with EN 12464-1), closing profiles, with a predefined length or cut to measure, or darklight aluminium grille with high specular qualities and mounting brackets or suspension cables. IP20/IP40 protection rating.

PRODUCT SPECS

Installation method	system
Finishing	White
Weight	1.83 Kg
Dimension	L2000 mm

WEB PAGE



ASSEMBLY INSTRUCTIONS



Complies with EN605981 and related notes. In the absence of metric symbols, the measurements are all in millimetres.
Luminous flux and power data are initially subject to tolerances +/- 10%. The values refer to an ambient temperature of 25°C unless otherwise specified.
We reserve the right to make changes to our products at any time.

Page 1 / 2

OPTIONAL ACCESSORIES

File System End feed RIGHT

Head feeder; polycarbonate body; copper alloy contacts. Color finish [finitura]. Possibility of separate management of three circuits On/ Off or management via digital signal (DALI)



code LT9020.1/01

Head feeder; polycarbonate body; copper alloy contacts. Color finish [finitura]. Possibility of separate management of three circuits On/ Off or management via digital signal (DALI)

Technical Sheet



File System End feed left



code LT9021.1/01

Head feeder; polycarbonate body; copper alloy contacts. Color finish bianco. Possibility of separate management of three circuits On/ Off or management via digital signal (DALI)

Technical Sheet



File System Straight connector



code LT9023.1/01

3 phase mixed-system electrified track, with two additional conductors to manage a general digital or analogic signal (1-10V, DALI, dmx, lon, eib, etc.). Body made of powder coated extruded aluminum, housing four copper conductors (three phases and one neutral 16A) and two copper conductors for the data signal, insulated in PVC. 4mm²-section earth conductor incorporated in the extrusion. Arranged for ON/OFF separate three-circuit switch or management through digital signal (DALI). EN 60570 certified. Its installation must be accomplished by highly qualified personnel. Four possible installation systems: directly on ceiling/wall by using the needlepoints provided on the track, on ceiling/wall by using the metal clips (order separately), hanging by using the suspension kits (order separately) or recessed, without exceeding the maximum loads. To be used with projectors provided with Eurostandard adapter (for standard use) or with DALI-Stucchi adapter (for DALI use).

Technical Sheet



Blind end Track System



code LT9033.1/01

Closing end cap for three-phase rail + Dali, eurostandard. Polycarbonate. Color finish bianco.

Technical Sheet

