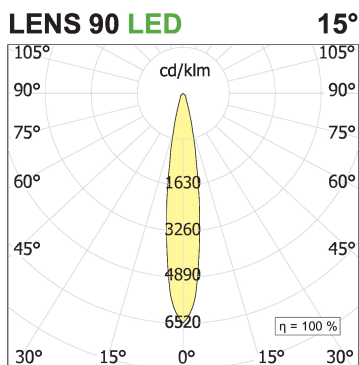
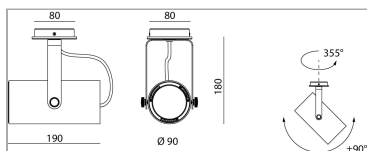
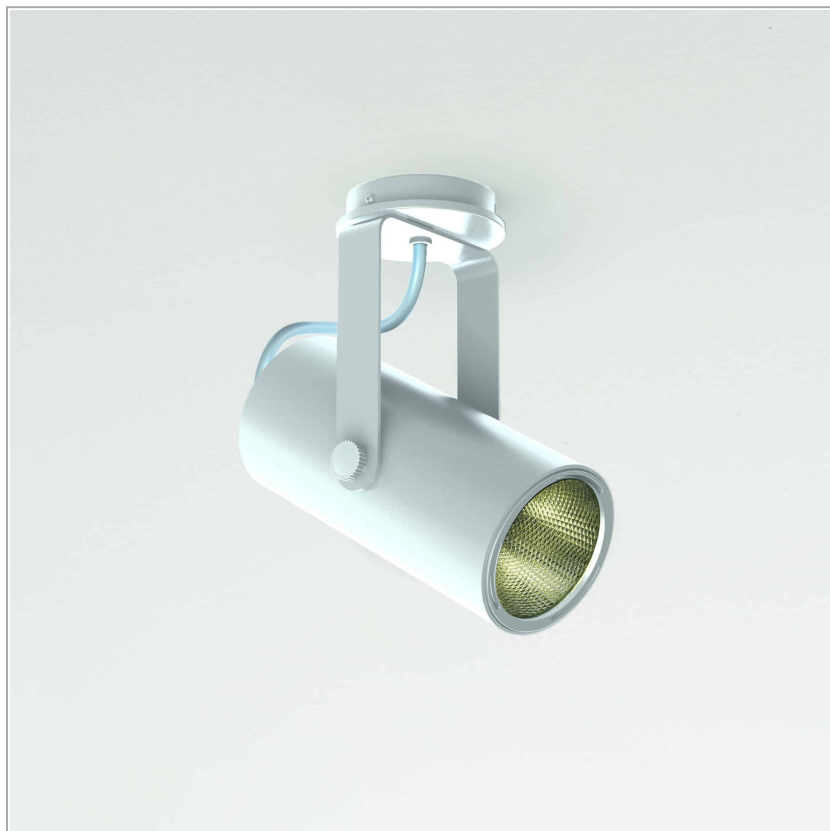


## Phar Wall/ceiling 90

code PH152.940SD/01



### PRODUCT DESCRIPTION

Professional projectors for ceiling-wall installation. Complete with professional LED source 2700K, 3000K e 4000K; optic 15°, 24° e 38° interchangeable Twist & Lock, also available in Dali or trailing/leading edge dimmable version. Cylindrical body and optical group in painted extruded aluminium. Mechanical joints steel-made. Optical group 355° vertically and +/- 90° horizontally adjustable.

### PRODUCT SPECS

Installation method	Wall surface mounted, Ceiling surface mounted
Light source	Led
Absorbed power	17 W
Color temperature	4000K
Color rendering index CRI	>90
Optic	Spot 15°
Finishing	White
Luminaire luminous flux	2120 lm
Luminous efficiency	125 lm/W
MacAdam color tolerance	>3
Power supply/transformer	Included
Protocol	Dimmable
Energy efficiency class	D
Weight	1.6 Kg
Dimension	H190 Ø90 mm
IP Grade	IP20
Product Spec	Adjustable

### WEB PAGE



### ASSEMBLY INSTRUCTIONS



## OPTIONAL ACCESSORIES

### Accessori Lens With Ring Asymmetric lens with ring ø85



code L085A.A

uncategorized. White finishing

Technical Sheet



code L085A.A

uncategorized. Black finishing

Technical Sheet



### Accessori Lens With Ring Elipsoid lens with ring ø85



code L085E.A

uncategorized. White finishing

Technical Sheet



code L085E.A

uncategorized. Black finishing

Technical Sheet



### Accessori Lens With Ring Honeycomb louver with ring ø85



code L085R.A

uncategorized. White finishing

Technical Sheet





code L085R.A

uncategorized. Black finishing

Technical Sheet



### Accessori Lens With Ring Satin lens with ring ø85



code L085S.A

uncategorized. White finishing

Technical Sheet



code L085S.A

uncategorized. Black finishing

Technical Sheet

