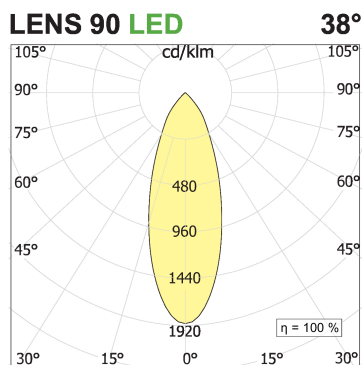
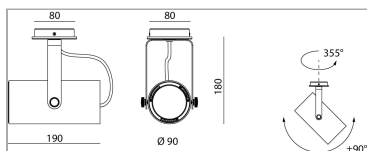
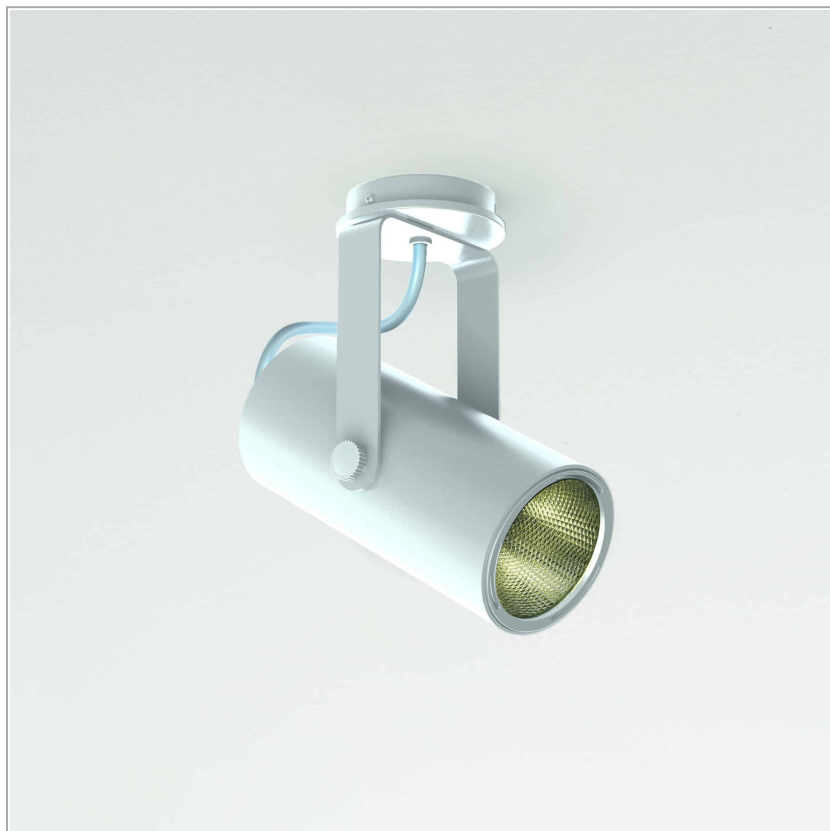


Phar Wall/ceiling 90

code PH155.9HCWD/01



PRODUCT DESCRIPTION

Professional projectors for ceiling-wall installation. Complete with professional LED source 2700K, 3000K e 4000K; optic 15°, 24° e 38° interchangeable Twist & Lock, also available in Dali or trailing/leading edge dimmable version. Cylindrical body and optical group in painted extruded aluminium. Mechanical joints steel-made. Optical group 355° vertically and +/- 90° horizontally adjustable.

PRODUCT SPECS

| | |
|---------------------------|--------------------------------------------------|
| Installation method | Wall surface mounted, Ceiling surface mounted |
| Light source | Led-en |
| Absorbed power | 24,3 W |
| Color temperature | Horticulture |
| Color rendering index CRI | >90 |
| Optic | Wide 38° |
| Finishing | White |
| MacAdam color tolerance | 3 |
| Durata media stimata | 3SDCM 50000h L90 B10 ta 25°C |
| Power supply/transformer | Included |
| Protocol | Dimmable |
| Energy efficiency class | E |
| Weight | 1.6 Kg |
| Dimension | H190 Ø90 mm |
| IP Grade | IP20 |
| Product Spec | Adjustable |

WEB PAGE



ASSEMBLY INSTRUCTIONS



OPTIONAL ACCESSORIES

Accessori Lens With Ring Asymmetric lens with ring ø85



code L085A.A

uncategorized. White finishing

Technical Sheet



code L085A.A

uncategorized. Black finishing

Technical Sheet



Accessori Lens With Ring Elipsoid lens with ring ø85



code L085E.A

uncategorized. White finishing

Technical Sheet



code L085E.A

uncategorized. Black finishing

Technical Sheet



Accessori Lens With Ring Honeycomb louver with ring ø85



code L085R.A

uncategorized. White finishing

Technical Sheet





code L085R.A

uncategorized. Black finishing

Technical Sheet



Accessori Lens With Ring Satin lens with ring ø85



code L085S.A

uncategorized. White finishing

Technical Sheet



code L085S.A

uncategorized. Black finishing

Technical Sheet

