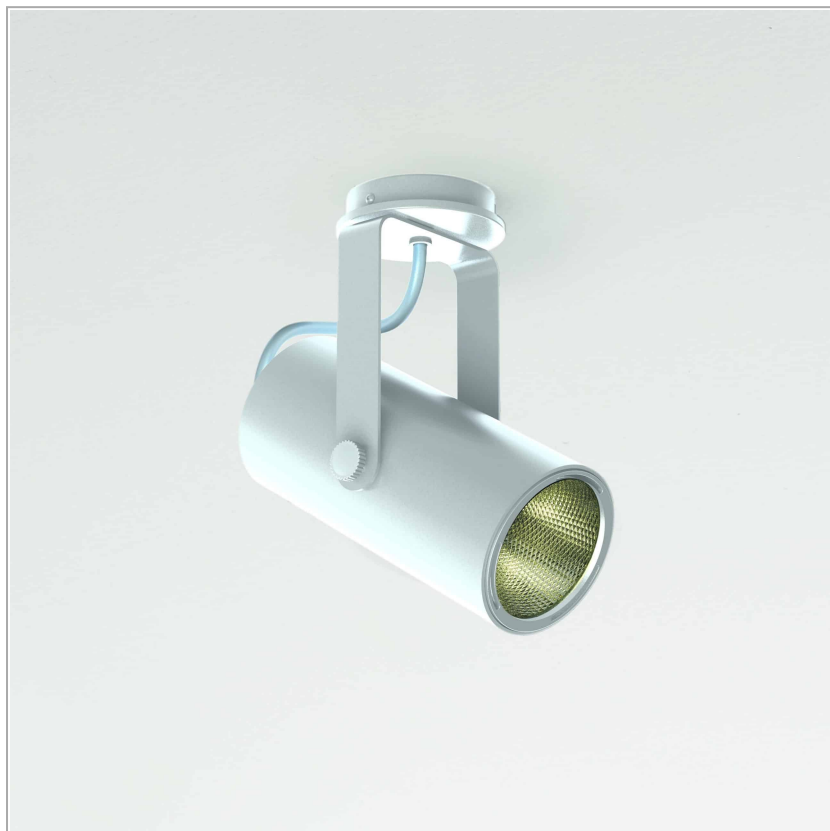


Phar Wall/ceiling 90

code PH156.940WDF/01



PRODUCT DESCRIPTION

Professional projectors for ceiling-wall installation. Complete with professional LED source 2700K, 3000K e 4000K; optic 15°, 24° e 38° interchangeable Twist & Lock, also available in Dali or trailing/leading edge dimmable version. Cylindrical body and optical group in painted extruded aluminium. Mechanical joints steel-made. Optical group 355° vertically and +/- 90° horizontally adjustable.

PRODUCT SPECS

Installation method	Wall surface mounted, Ceiling surface mounted
Light source	Led-cob
Absorbed power	32 W
Color temperature	4000K
Color rendering index CRI	>90
Optic	Wide 38°
Finishing	Bianco
Luminaire luminous flux	3720 lm
Luminous efficiency	116 lm/W
MacAdam color tolerance	3
Durata media stimata	50000h Ta 25° L70B10
Power supply/transformer	Included
Protocol	Dimmable F
Energy efficiency class	D
Weight	1.6 Kg
Dimension	H190 Ø90 mm
IP Grade	IP20
Product Spec	Adjustable

WEB PAGE



ASSEMBLY INSTRUCTIONS



OPTIONAL ACCESSORIES

Accessori Lens With Ring Asymmetric lens with ring ø85



code L085A.A

uncategorized. White finishing

Technical Sheet



code L085A.A

uncategorized. Black finishing

Technical Sheet



Accessori Lens With Ring Elipsoid lens with ring ø85



code L085E.A

uncategorized. White finishing

Technical Sheet



code L085E.A

uncategorized. Black finishing

Technical Sheet



Accessori Lens With Ring Honeycomb louver with ring ø85



code L085R.A

uncategorized. White finishing

Technical Sheet





code L085R.A

uncategorized. Black finishing

Technical Sheet



Accessori Lens With Ring Satin lens with ring ø85



code L085S.A

uncategorized. White finishing

Technical Sheet



code L085S.A

uncategorized. Black finishing

Technical Sheet

