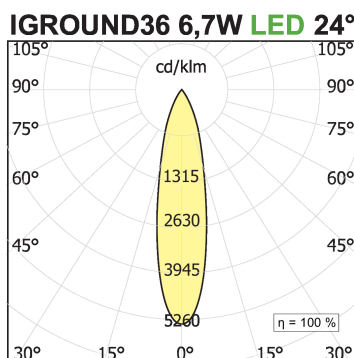
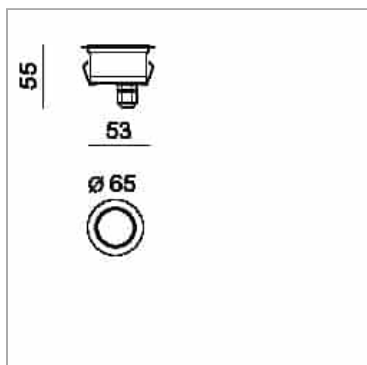


Iground Fixed 36

code IG001C.927F/20



PRODUCT DESCRIPTION

Collection of walk-over recessed floor luminaires with integrated Chip On Board LED sources with monochromatic emission, fixed or adjustable optics. The tilting is obtained without having to open the article, thanks to a mechanical movement located on the lamp body. The body, circular in shape, is available in three sizes Ø 65 mm, Ø 84 mm, Ø 132 mm and made of anodized aluminum, with an AISI 316L stainless steel flange, complete with extra-clear tempered safety glass, without visible screws. The fixtures are supplied with 2 meters of neoprene cable. Additional 5m, 10m, 15m or 20m cable is available upon request. Cylindrical outer casings available. IP67.

PRODUCT SPECS

Installation method	Recessed with frame, Floor
Light source	LED
Absorbed power	4,3 W
Color temperature	2700K
Color rendering index CRI	>90
Optic	Flood 24°
Finishing	Brushed steel
Luminous flux of the product	433 lm
Luminous efficiency	101 lm/W
MacAdam color tolerance	3
Life time estimate	3SDCM 50000h L90 B10 ta 25°C
Weight	0.2 Kg
Dimension	L10000xH55 Ø65 mm
Hole size	54 mm
IP Grade	IP67
Protection Class	Class III appliance
Product Spec	Walk-over, Circular shape
Power supply/Transformer	Not included
Protocol	See power supply

WEB PAGE

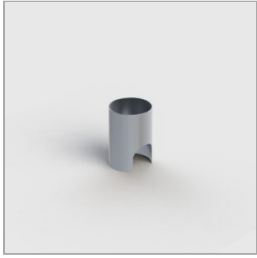


ASSEMBLY INSTRUCTIONS



MANDATORY ACCESSORIES

Box IGround 36



code CCIG01

uncategorized

Technical Sheet

