

FARETÈN

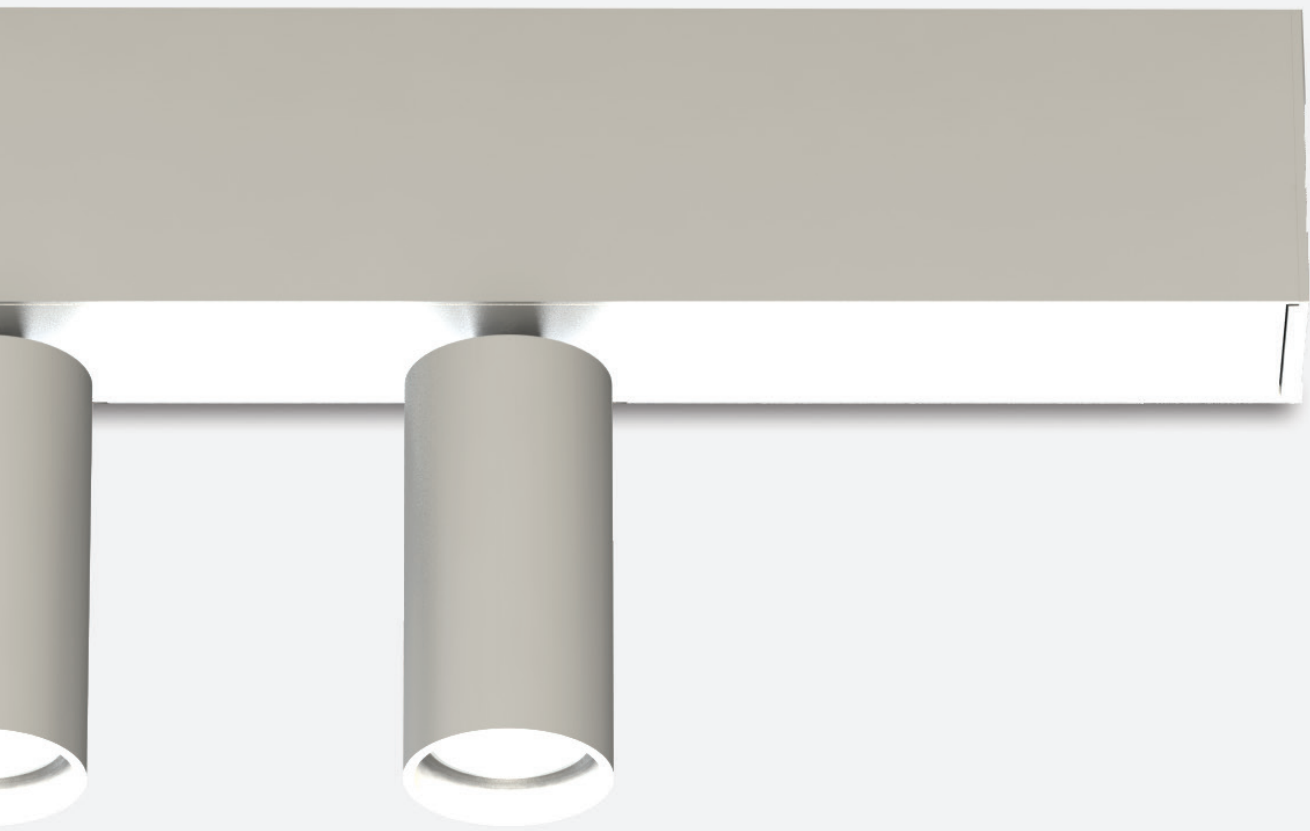
MODULI FINITI

DEFAULT MODULES

Collezione di proiettori di dimensioni estremamente contenute completi di sorgente LED chip on board e driver integrato. La gamma si articola in due tipi di apparecchi: spot LED, di forma sferica, orientabili sull'asse verticale e orizzontale, alloggiati in moduli da cinque unità e proiettori di forma cilindrica di diametro 36 e 55mm., orientabili sull'asse verticale e orizzontale, alloggiati in moduli da uno e due unità. Disponibili inseriti all'interno di un modulo finito in estruso di alluminio, installabile ad incasso con battuta e trimless. Grado di protezione IP20.

Collection of extremely small projectors complete with LED chip on board source and integrated driver. The range is divided into two types of luminaires: LED spots, with spherical shape, adjustable on the vertical and horizontal axis, housed in modules of five units and cylindrical shaped projectors of diameter 36 and 55mm., adjustable on the vertical axis and horizontal, housed in modules of one and two units. Available inserted inside a finished module in extruded aluminum, which can be installed flush-mounted with frame or trimless. IP20.

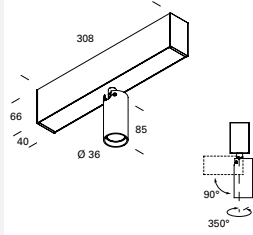




WALL CEILING

FARETÈN FOCUS 41

PARETE/SOFFITTO WALL/CEILING



LED		lm product/beam 3000K			CODE	Col.			
W	Dim.	ø	Kg	19°			28°	18°x38°	
8	40x308	36	0.91	665	695	508	FR001.9		/01 /02

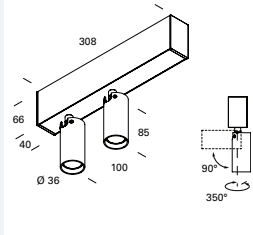
● Kelvin	● Beam	● Dimmable (optional)
27 2700K	S 19°	D Dali
30 3000K	F 28°	
40 4000K	Z 18°x38°	

Per installazione in profilo Container File ordinare n.2 LT2481 staffa per fissaggio modulo luminoso all'interno della cassaforma. | To install in Container File profile order n.2 LT2481 single bracket to fix the lighting module within the wallbox.

Accessori - accessories: LTF1.1000, LTF1.2000, LTF1.3000, LTF1.misura: cassaforma File - wallbox File - LT2480.1: Coppia di testate cassaforma FILE - couple of closure heads for wallbox FILE - LT2481: staffa singola per fissaggio modulo - module fixing single bracket

FARETÈN FOCUS 42

PARETE/SOFFITTO WALL/CEILING



LED		lm product/beam 3000K			CODE	Col.			
W	Dim.	ø	Kg	19°			28°	18°x38°	
16	40x308	36	1.10	1330	1390	1016	FR002.9		/01 /02

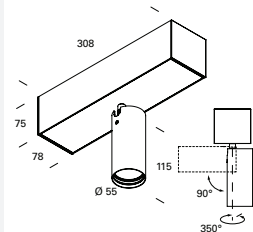
● Kelvin	● Beam	● Dimmable (optional)
27 2700K	S 19°	D Dali
30 3000K	F 28°	
40 4000K	Z 18°x38°	

Per installazione in profilo Container File ordinare n.2 LT2481 staffa per fissaggio modulo luminoso all'interno della cassaforma. | To install in Container File profile order n.2 LT2481 single bracket to fix the lighting module within the wallbox.

Accessori - accessories: LTF1.1000, LTF1.2000, LTF1.3000, LTF1.misura: cassaforma File - wallbox File - LT2480.1: Coppia di testate cassaforma FILE - couple of closure heads for wallbox FILE - LT2481: staffa singola per fissaggio modulo - module fixing single bracket

FARETÈN FOCUS 55

PARETE/SOFFITTO WALL/CEILING



LED		lm product/beam 3000K			CODE	Col.		
W	Dim.	ø	Kg	27°			46°	
12	78x308	55	1.29	1285	1289	FR006.9		/01 /02
18	78x308	55	1.29	1575	1579	FR007.9		

● Kelvin	● Beam	● Dimmable (optional)
27 2700K	F 27°	D Dali
30 3000K	W 46°	
40 4000K		

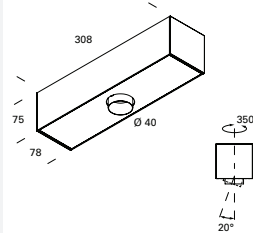
Per installazione in profilo Container File2 ordinare n.2 LT2891 staffa per fissaggio modulo luminoso all'interno della cassaforma. | To install in Container File2 profile order n.2 LT2891 single bracket to fix the lighting module within the wallbox.

Accessori - accessories:

LTF2.1000, LTF2.2000, LTF2.3000, LTF2.misura: cassaforma File 2 - wallbox File2 - LT2890.1: coppia di testate cassaforma FILE 2 - couple of closure heads for wallbox FILE 2 - LT2891: staffa singola File2 - single bracket to fix the lighting modules L055#A: Anello ø55 + lente - lens with ring ø55

FARETÈN SPOT

PARETE/SOFFITTO WALL/CEILING



LED		lm product/beam 3000K			CODE	Col.	
W	Dim.	ømm	H Kg	28°			
5	78x308	40	75 1.00	465	FR005.9		/01 /02

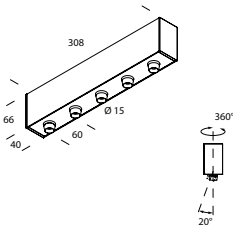
● Kelvin	● Beam	● Dimmable (optional)
27 2700K	F 28°	D Dali
30 3000K		
40 4000K		

Per installazione in profilo Container File2 ordinare n.2 LT2891 staffa per fissaggio modulo luminoso all'interno della cassaforma. | To install in Container File2 profile order n.2 LT2891 single bracket to fix the lighting module within the wallbox.

Accessori - accessories:

LTF2.1000, LTF2.2000, LTF2.3000, LTF2.misura: cassaforma File 2 - wallbox File2 - LT2890.1: coppia di testate cassaforma FILE 2 - couple of closure heads for wallbox FILE 2 - LT2891: staffa singola File2 - single bracket to fix the lighting modules

FARETÈN MINISPOT 5 PARETE/SOFFITTO
FARETÈN MINISPOT 5 WALL/CEILING

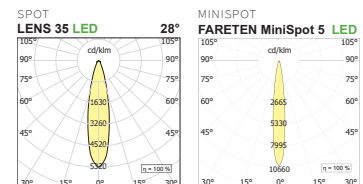


LED W	Dim.	ømm	H	Kg	lm product/beam 3000K	CODE	Col.
7,5	40x308	15	66	0.83	685	FR003.9	/01 /02

Kelvin	Beam	Dimmable (optional)
27 2700K	F 28°	D Dali
30 3000K		
40 4000K		

Per installazione in profilo Container File ordinare n.2 LT2481 staffa per fissaggio modulo luminoso all'interno della cassaforma. | To install in Container File profile order n.2 LT2481 single bracket to fix the lighting module within the wallbox.

Accessori - accessories: LTF1.1000, LTF1.2000, LTF1.3000, LTF1.misura: cassaforma File - wallbox File - LT2480.1: Coppia di testate cassaforma FILE - couple of closure heads for wallbox FILE - LT2481: staffa singola per fissaggio modulo - module fixing single bracket



ACCESSORI - ACCESSORIES



CASSAFORMA CONTAINER PER INCASSO RASATO IN CARTONGESSO O LATERIZIO CEMENTO
WALLBOX CONTAINER FOR TRIMLESS RECESSED IN PLASTERBOARD OR BRICKWALL AND CONCRETE

LTF1.### PAG. 254

LTF2.### PAG. 256