



NANOFILE *OUTDOOR*



OUTDOOR

NANOFILE

SILICONE

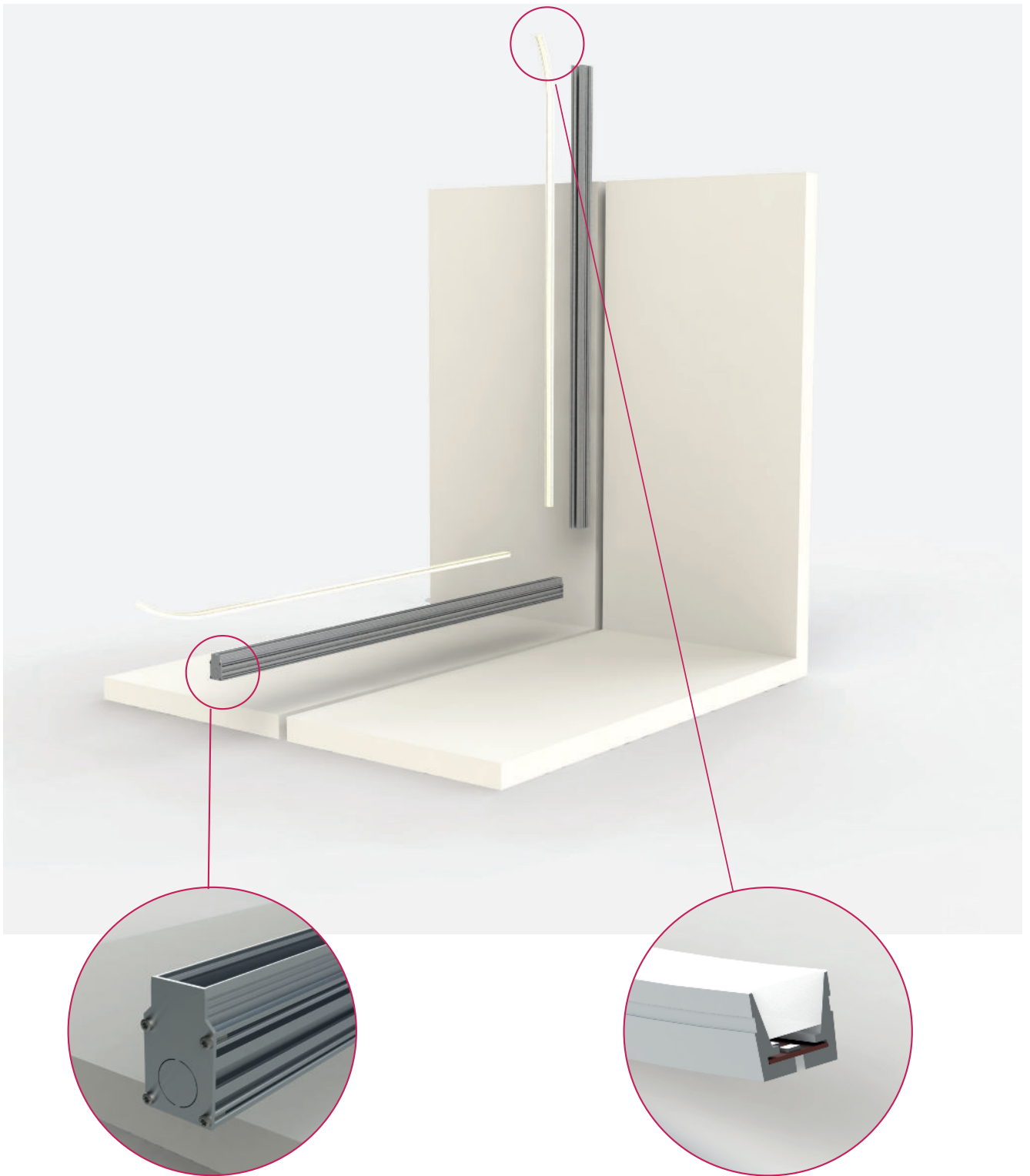
Sistema modulare per illuminazione da esterno diffusa, composto da profili vuoti in estruso di alluminio anodizzato disponibili in lunghezze predefinite, disponibili nella versione incasso trimless. Testate di chiusura laterali con sistema Light Proof. Da completare con elemento luminoso in silicone completo di sorgenti lineari LED e con alimentatore 24V da installarsi remoto. Grado di protezione IP67.

Modular system for diffused outdoor lighting, composed of empty profiles in anodized extruded aluminum available in predefined lengths, trimless recessed version. Side end caps with Light Proof system. To be completed with silicone light element complete with LED linear sources and with 24V power supply to be installed remotely. IP67.

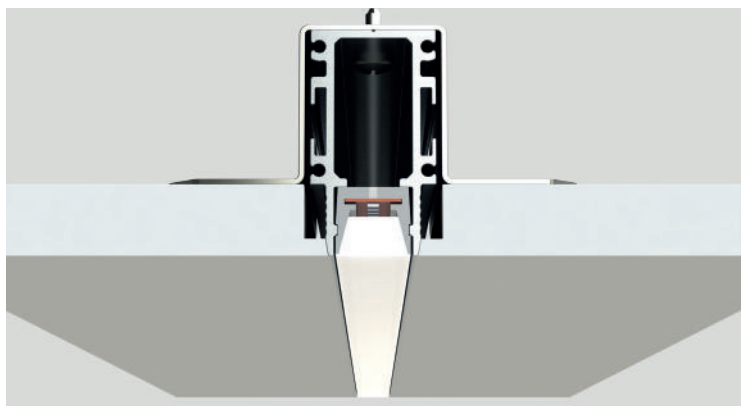




OUTDOOR

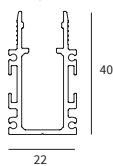
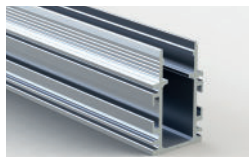


INSTALLAZIONE IN CARTONGESSO
INSTALLATION IN PLASTERBOARD



PROFILO VUOTO PER LATERIZIO, CARTONGESSO E CALCESTRUZZO

EMPTY PROFILE FOR BRICK WALL, PLASTERBOARD AND CONCRETE

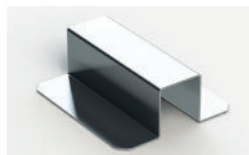


Dim.	H
505x22	40
1005x22	40
2005x22	40
3005x22	40

CODE	Col.
NN01.505	/27
NN01.1005	
NN01.2005	
NN01.3005	

STAFFA DI FISSAGGIO PER CARTONGESSO

FIXING BRACKET FOR PLASTERBOARD



CODE	Col.
NN02	/27

Minimo 2 pezzi, 1 ogni metro | minimum 2 pieces 1 every meter

COPPIA TESTATE

COUPLE CLOSURE HEAD



CODE	Col.
NN03	/27

COPPIA GIUNTI LINEARI

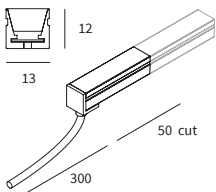
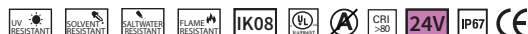
LINEAR JOINTS COUPLE



CODE
NN04

ELEMENTO LUMINOSO IN SILICONE, LINEA LED INTERNA

SILICONE LIGHTING MODULE, STRIP LED INSIDE



W	V	L.mm	lm product/3000K	CODE	
48	24	5000	3200	NN05.8	●

● Kelvin
27 2700K
30 3000K
40 4000K

KIT GLUE & CAPS

KIT GLUE & CAPS



CODE
NN07
NN08

GLUE 10 ml
COUPLE OF END CAPS

Da utilizzare nel caso in cui sia necessario tagliare l'elemento luminoso - To use if necessary to cut the lighting module.

CONNETTORE IP68 DA POSIZIONARE NEL POZZETTO

CONNECTOR IP68 TO BE POSITIONED IN THE ELECTRIC WELL



CODE
NN09

ALIMENTATORI

POWER SUPPLY

I	V IN	V OUT RANGE	W	AXB mm	L mm	FORO Ø mm	IP	24V
max 0,8 A	220÷240V	24	25	38X29	131	48	67	AE25.24VIP
max 2,5 A	220÷240V	24	60	44X40	198	70	67	AE60.24VIP
max 4 A	220÷240V	24	100	70X35	201	79	67	AE100.2.24VIP
max 6 A	120÷240V	24	150	69X37	210	78	67	AE150.24VIP
max 6 A	220÷240V	24	150	63X35	220	73	67	AE150D.24VIP

OUTDOOR