

# QUADRA

Collezione di proiettori fissi e orientabili per sorgenti LED multichip integrate. Possibilità di montaggio a incasso, con basetta, a soffitto o con magnete. Corpo apparecchio in estruso di alluminio verniciato. Gruppi ottici antiabbagliamento completi di led chip on board (CRI>90) e lenti. Ottiche spot, flood, wideflood. Disponibilità di accessori come snooter e cover piramidali. Da completare con alimentatori elettronici remoti per le versioni ad incasso. Grado di protezione IP20/IP40.

Collection of fixed and adjustable projectors, recessed, surface, ceiling and magnet mounted, for integrated multichip LED sources. Luminaire body in painted extruded aluminum. Anti-glare optical groups complete with LED chip on board (CRI> 90) and lenses. Spot, flood, wideflood optics. Accessories such as snooter and pyramidal covers available. To be completed with remote electronic drivers for the recessed versions. IP20/IP40.

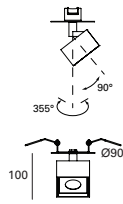




PROJECTORS

# QUADRA PROIETTORI DA INCASSO - PROJECTOR TO RECESS

## QUADRA 32 INCASSO QUADRA 32 RECESSED



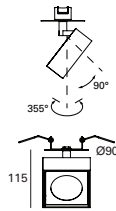
84 mm **700** **A++** **III** **IP20** **CRI >90** **A** **LED** **CE**

| LED |     |       |     |     | lm product/beam 3000K |  | CODE          |  | Col.       |
|-----|-----|-------|-----|-----|-----------------------|--|---------------|--|------------|
| W   | mA  | Dim.  | H   | Kg  | 38°                   |  |               |  |            |
| 6,7 | 700 | 68x68 | 100 | 0,3 | 742                   |  | <b>QS30.9</b> | <span style="color: orange;">●</span> <span style="color: green;">●</span> | /01<br>/02 |

● Kelvin  
**27** 2700K  
**30** 3000K  
**40** 4000K

● Beam  
**W** 38°

## QUADRA 65 INCASSO QUADRA 65 RECESSED



84 mm **350** **A++** **III** **IP20** **CRI >90** **A** **LED** **CE**

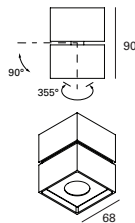
| LED |     |       |     |      | lm product/beam 3000K |      | CODE          |  | Col.       |
|-----|-----|-------|-----|------|-----------------------|------|---------------|--|------------|
| W   | mA  | Dim.  | H   | Kg   | 20°                   | 36°  |               |  |            |
| 12  | 350 | 98x98 | 115 | 0,45 | 1411                  | 1129 | <b>QS31.9</b> | <span style="color: orange;">●</span> <span style="color: green;">●</span> | /01<br>/02 |

● Kelvin  
**27** 2700K  
**30** 3000K  
**40** 4000K

● Beam  
**F** 20°  
**W** 36°

# QUADRA PROIETTORI CON BASETTA - PROJECTOR WITH BASE

## QUADRA 32 SOFFITTO QUADRA 32 CEILING - MOUNTED



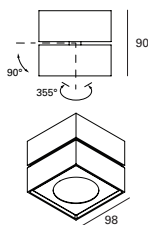
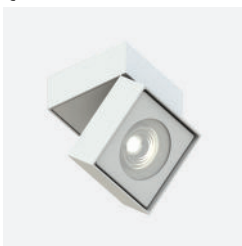
**700** **CRI >90** **A++** **III** **IP20** **A** **LED** **CE**

| LED |     |       |    |     | lm product/beam 3000K |  | CODE          |  | Col.       |
|-----|-----|-------|----|-----|-----------------------|--|---------------|--|------------|
| W   | mA  | Dim.  | H  | Kg  | 38°                   |  |               |  |            |
| 6,7 | 700 | 68x68 | 90 | 0,6 | 742                   |  | <b>QS10.9</b> | <span style="color: orange;">●</span> <span style="color: green;">●</span> | /01<br>/02 |

● Kelvin  
**27** 2700K  
**30** 3000K  
**40** 4000K

● Beam  
**W** 38°

## QUADRA 65 SOFFITTO QUADRA 65 CEILING - MOUNTED

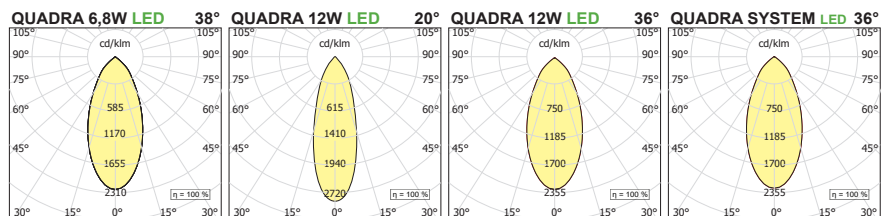


**A++** **CRI >90** **IP20** **230V ac** **A** **LED** **CE**

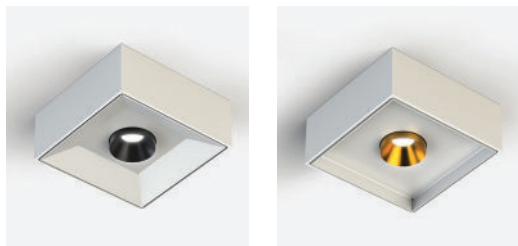
| LED |       |    |      |  | lm product/beam 3000K |      | CODE          |  | Col.       |
|-----|-------|----|------|--|-----------------------|------|---------------|--|------------|
| W   | Dim.  | H  | Kg   |  | 20°                   | 36°  |               |  |            |
| 12  | 98x98 | 90 | 0,90 |  | 1411                  | 1129 | <b>QS11.9</b> | <span style="color: orange;">●</span> <span style="color: green;">●</span> | /01<br>/02 |

● Kelvin  
**27** 2700K  
**30** 3000K  
**40** 4000K

● Beam  
**F** 20°  
**W** 36°

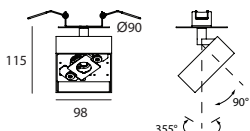
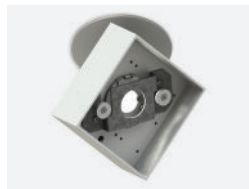


# QUADRA SISTEMA - SYSTEM



## CORPO INCASSO RECESSED BODY

Ø84mm **350** **A++** **IP20** **CRI >90** **LED** **CE**



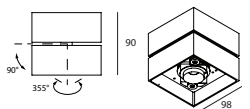
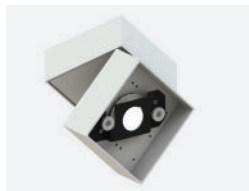
| LED |     | W     | mA  | Dim. | H    | Kg            | lm product 3000K                      | CODE                     | Col. |
|-----|-----|-------|-----|------|------|---------------|---------------------------------------|--------------------------|------|
| 12  | 350 | 98x98 | 115 | 0,45 | 1350 | <b>QS00.9</b> | <span style="color: orange;">●</span> | <b>/01</b><br><b>/02</b> |      |

● Kelvin  
27 2700K  
30 3000K  
40 4000K

Accessori - Accessories: QM100: spot snooter - spot snooter  
QM200: cover piramidale A - cover A - QM201: cover B - cover B

## CORPO SOFFITTO WALL/CEILING BODY

**A++** **IP20** **230V ac** **A** **CRI >90** **LED** **CE**



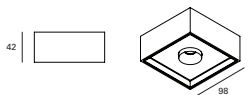
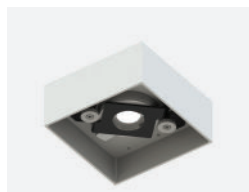
| LED |  | W     | Dim. | H    | Kg   | lm product 3000K | CODE                                  | Col.                     |
|-----|--|-------|------|------|------|------------------|---------------------------------------|--------------------------|
| 12  |  | 98x98 | 90   | 0,90 | 1350 | <b>QS01.9</b>    | <span style="color: orange;">●</span> | <b>/01</b><br><b>/02</b> |

● Kelvin  
27 2700K  
30 3000K  
40 4000K

Accessori - Accessories: QM100: spot snooter - spot snooter  
QM200: cover piramidale A - cover A - QM201: cover B - cover B

## CORPO MAGNETICO SOFFITTO MAGNETIC CEILING BODY

**A++** **IP20** **230V ac** **A** **CRI >90** **LED** **CE**



| LED 220V ac |  | W     | Dim. | H    | Kg  | lm product 3000K | CODE                                  | Col.                     |
|-------------|--|-------|------|------|-----|------------------|---------------------------------------|--------------------------|
| 8,6         |  | 98x98 | 42   | 0,90 | 800 | <b>QS03.930</b>  | <span style="color: orange;">●</span> | <b>/01</b><br><b>/02</b> |

● Kelvin  
27 2700K  
30 3000K  
40 4000K

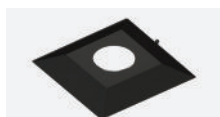
Accessori - Accessories: QM100: spot snooter - spot snooter  
QM200: cover piramidale A - cover A - QM201: cover B - cover B

## SPOT SNOOTER



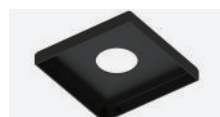
| Ømm | CODE         | Col.                                   |
|-----|--------------|--|
| 33  | <b>QM100</b> | <b>/01</b><br><b>/02</b><br><b>/44</b> |

## COVER A - PIRAMIDALE



| Dim.  | H  | CODE         | Col.                                   |
|-------|----|--------------|--|
| 90x90 | 16 | <b>QM200</b> | <b>/01</b><br><b>/02</b><br><b>/44</b> |

## COVER B - PIANA



| Dim.  | H  | CODE         | Col.                                   |
|-------|----|--------------|--|
| 90x90 | 16 | <b>QM201</b> | <b>/01</b><br><b>/02</b><br><b>/44</b> |

## KIT D'AGGANCIO QUADRA A FILE PRO

KIT TO USE AS FIXING POINT FOR QUADRA TO FILE PRO



| CODE         |
|--------------|
| <b>FP055</b> |