

SIGHT

Collezione di proiettori da incasso orientabili trimless o con battuta, con sorgente COB LED. Struttura in acciaio verniciato quadrata o rettangolare ad una o più sorgenti. Gruppo ottico telescopico estraibile e orientabile. La versione trimless necessita obbligatoriamente di controtelaio per installazione su controsoffitti in cartongesso da 13mm. Equipaggiati con LED ad alta resa, CRI >90, dissipatore passivo ad alte prestazioni in alluminio estruso anodizzato nero e riflettore metallizzato in alluminio 99,99%. Da associare a driver remoti stabilizzati in corrente. Equipaggiabile, all'occorrenza, con spettri per orticoltura. Installabile anche in pareti e soffitti in calcestruzzo mediante apposita cassaforma in lamiera zincata disponibile come accessorio Grado di protezione IP20/IP23.

Family of trimless or trimmed adjustable recessed spotlights, with COB LED source. Square or rectangular painted steel structure with one or more light sources. Removable and adjustable telescopic optical unit. The trimless version necessarily requires a counterframe for installation on 13mm plasterboard ceilings. Equipped with high-performance LEDs, CRI > 90, high-performance passive heat sink in black anodized extruded aluminum and metallized reflector in 99.99% aluminum. To be associated with remote drivers. They might be realized, if necessary, with spectra for horticulture. Extruded aluminum formwork for concrete recessed installation available as an accessory. IP20/IP23.



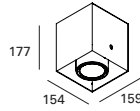


DOWNLIGHT

SIGHT MINIMAL

vedi accessori

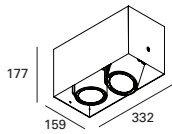
SIGHT MINIMAL 1M



LED		lm product/beam 3000K						500 700	
W	mA	Dim.	H	15°	24°	38°	CODE	Col.	
17	500	159x154	177	1930	1827	1905	LT4301M.9		
24,3	700	159x154	177	2468	2356	2430			/01 /02
● Kelvin ● Beam 27 2700K S 15° 30 3000K F 24° 40 4000K W 38°									

Accessori - accessories: TEIN01M: telaio Incas 1AM - frame Incas 1AM
L085#A: Anello ø85 con lente - lens with ring ø85

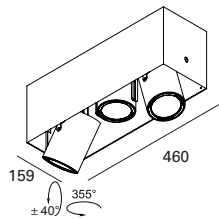
SIGHT MINIMAL 2M



LED		lm product/beam 3000K						500 700	
W	mA	Dim.	H	15°	24°	38°	CODE	Col.	
2x17	500	159x332	177	3860	3654	3810	LT4304M.9		
2x24,3	700	159x332	177	4936	4712	4860			/01 /02
● Kelvin ● Beam 27 2700K S 15° 30 3000K F 24° 40 4000K W 38°									

Accessori - accessories: TEIN02M: telaio Incas 2AM - frame Incas 2AM
L085#A: Anello ø85 con lente - lens with ring ø85

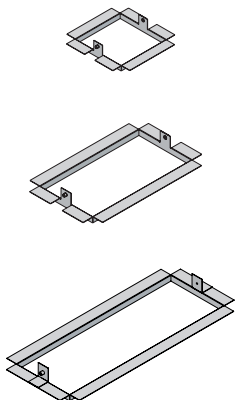
SIGHT MINIMAL 3M



LED		lm product/beam 3000K						500 700	
W	mA	Dim.	H	15°	24°	38°	CODE	Col.	
3x17	500	159x460	177	5790	5481	5715	LT4309M.9		
3x24,3	700	159x460	177	7404	7068	7290			/01 /02
● Kelvin ● Beam 27 2700K S 15° 30 3000K F 24° 40 4000K W 38°									

Accessori - accessories: TEIN03M: telaio incas 3AM - frame Incas 3AM
L085#A: Anello ø85 con lente - lens with ring ø85

TELAIO SIGHT MINIMAL ISPEZIONABILE PER CARTONGESSO PLASTERBOARD INSPECTABLE FRAME FOR SIGHT MINIMAL



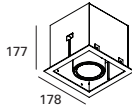
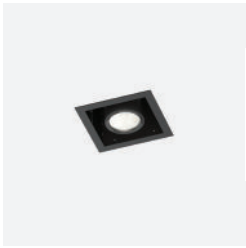
Dim.	CODE
162x163	TEIN01M
316x163	TEIN02M
470x163	TEIN03M

Telaio ispezionabile da fissare e stuccare nel cartongesso da 15mm. Per cartongessi da 13mm spessorare -
Inspectable frame to be fixed and plastered in 15mm height plasterboard false ceilings

SIGHT FRAME



SIGHT FRAME 1F



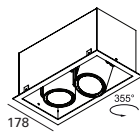
162X162 **500** **700**

LED		lm product/beam 3000K			CODE	Col.		
W	mA	Dim.	H	15°	24°	38°		
17	500	178x178	177	1930	1827	1905	LT4301.9	● ● /01
24,3	700	178x178	177	2468	2356	2430		/02

- Kelvin | ● Beam
- 27** 2700K | **S** 15°
- 30** 3000K | **F** 24°
- 40** 4000K | **W** 38°

Accessori - accessories: L085#.A: Anello ø85 con lente - lens with ring ø85

SIGHT FRAME 2F



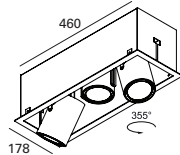
316X162 **500** **700**

LED		lm product/beam 3000K			CODE	Col.		
W	mA	Dim.	H	15°	24°	38°		
2x17	500	178x332	177	3860	3654	3810	LT4304.9	● ● /01
2x24,3	700	178x332	177	4936	4712	4860		/02

- Kelvin | ● Beam
- 27** 2700K | **S** 15°
- 30** 3000K | **F** 24°
- 40** 4000K | **W** 38°

Accessori - accessories: L085#.A: Anello ø85 con lente - lens with ring ø85

SIGHT FRAME 3F



470X162 **500** **700**

LED		lm product/beam 3000K			CODE	Col.		
W	mA	Dim.	H	15°	24°	38°		
3x17	500	178x460	177	5790	5481	5715	LT4309.9	● ● /01
3x24,3	700	178x460	177	7404	7068	7290		/02

- Kelvin | ● Beam
- 27** 2700K | **S** 15°
- 30** 3000K | **F** 24°
- 40** 4000K | **W** 38°

Accessori - accessories: L085#.A: Anello ø85 con lente - lens with ring ø85

LENTI CON ANELLO OPTIONAL LENSES WITH RING



	ømm	Kg	CODE	Col.
LENTE SATINATA/SATINED LENS	85	0,02	L085S.A	/01 /02

	ømm	Kg	CODE	Col.
LENTE ELISSOIALE/ELIPSOID LENS	85	0,02	L085E.A	/01 /02

	ømm	Kg	CODE	Col.
LENTE ASIMMETRICA/ASYMMETRIC LENS	85	0,02	L085A.A	/01 /02

	ømm	Kg	CODE	Col.
FILTRO NIDO D'APE/HONEY COMB LOUVER	85	0,02	L085R.A	/01 /02

